



All Saints, Great Thurlow

THE Village Link



St Peter's, Little Thurlow

April 2010



News and views from Great and Little Thurlow
plus The Little Bradley Column

Free to every residence (£5.00 p.a. when purchased)

THE VILLAGE LINK

Editorial co-ordinator
Reporters

Conrad Hawkins 783259
Gt. Thurlow Margaret Ince 783117
Lt. Thurlow Iris Eley 783534
Lt. Bradley Diana Curtis 783898

Village Link deadline 15th of each month. email villagelink@aol.com

FROM THE RECTOR. "Done with love and laughter" said the note left for me in the letterbox after a group of friends had made the Mothering Sunday bouquets for some of the churches; thanks to them and Molly Hawkins for the lovely flowers at Little Thurlow. Many young mums and dads go off to grandparents for Mothering Sunday so we were all rather mature, but then "you never drink the wine that's new, the old wine tastes much nicer" or so says a character in that 20s musical "No no Nannette". I am not sure though that 21st century wine buffs would agree. Changing water into wine was a feature in the story of Jesus visiting the wedding in Cana of Galilee. It was, according to John's Gospel one of the many "signs and wonders" that Jesus did. A sign interpreted as something new coming from the old, old vines producing new wine is a feature of every vineyard.

21st February saw us at Little Wrattling for the Benefice Service on Passion Sunday. Two weeks before the Holy Week events and the great celebration of Easter Day itself. Those of you who have been to the much appreciated Lent Course this year and the Lent Lunches have had chance to meet together and focus on holy things. There has been much love and laughter shared. Holy Week begins with services across the Benefice on Palm Sunday. There will not be many benefices which will have a choice of FIVE services to attend. I have been challenged by one person that this is far too many and we should really meet as one. Monday, Tuesday and Wednesday we have Compline at 6pm in Little Wrattling Church taken by a Lay Elder. Wednesday there will be the usual 10am Holy Communion Service at Kedington. Maundy Thursday the Holy Communion Service and Footwashing Ceremonies at Kedington 7.30pm. Good Friday we have one service at Little Thurlow at 11am and 7pm in Kedington. On Easter Eve at Great Wrattling the Renewal of Baptismal Vows and Lighting the new fire at Great Wrattling at 6pm a short service very much with families in mind. On Easter Day 9.30am at Kedington and 11am Great Bradley on Easter Day. I was once asked which service of all the Easter Services would I most want to attend? To be honest I cannot choose, although I would put Good Friday very high on the list and yet it remains one of the poorest attended in the Benefice and is the most solemn of all our days. Without Good Friday there would be NO Easter Day. It is extraordinary that the events we now celebrate went unnoticed by the rest of the world when they were actually taking place. At times even the disciples "stayed" away or ran for cover. No one really knew what was unfolding and indeed all these events could have been buried in history and indeed been forgotten if it had not been for the Resurrection experiences of a few. Throughout Jesus' ministry he seems always to have played down some of the events in his life, "tell no one", "taking the disciples aside" and so on. When that first Easter Morning came the wraps were off, they could remain silent no more and "love and laughter" brought the message of the Good News, the Gospel to the world. This Holy Week I hope we will all find time for solemn reflection and on Easter Day wherever we are and with who ever we share it I hope the message will be brought to many with "love and laughter".

John Eley, Rector

NATURE NOTE. I left Thurlow in early March on a raw winter's day, temperature near to freezing, with a chill, dry wind from the east threatening snow. Twenty-four hours later I arrived at my destination, slap bang on the equator, with the temperature in the high 30s C (or 90s F) and drenching humidity. I gasped, and dripped, and stepped out ... into the jungles of Borneo.

All the sights and sounds are different in the tropical jungle, with a vivid intensity that makes you gawp in disbelief. Huge multi-coloured butterflies float around you, sipping at the brilliant orchids (there are some 1200 different ones here) and at exotic fruits and flowers everywhere; ferns and lianas trail from the steeping trees whose spires disappear into the distant canopy above; a thousand insects buzz and whine around you, and in the background is the unceasing tinnitus of cicadas and tree-frogs. There are unseen slitherings and scuttlings on the forest floor too that you feel quite happy to leave unseen, though you know a hundred pairs of eyes may be watching *you*, and there is the occasional clamour in the small branches as a playful troupe of monkeys swings by, whooping and hollering. Once I heard the loud crashing sounds made by some larger animal in the trees, stood stock still and was rewarded with a close encounter of a hairy kind with our near-relative the orangutan, who shares about 97% of our DNA and has those big soulful, expressive eyes. They are now a very endangered species, alas, and survive in the wild only here and on the island of Sumatra. This one, a big female, hung nonchalantly by one very long arm from a vine just yards away and inspected the strange bearded interloper while she sucked on some large squashy fruit and then hauled herself slowly and easily away (somewhat to my relief I must admit but, yes, I did get the photo). I also saw water-buffalo wallowing in a creek, big monitor lizards five feet long in a mangrove swamp, lots of bright green geckos and a few snakes, including one python coiled asleep in the fork of a tree above my head.

And then there were the birds, in their bewildering variety and of every hue, shape and size. I struggled to identify the smaller ones as they flitted through the flickering foliage, a profusion of flower-peckers, sunbirds, spider-eaters, fantails, babblers, trogons and bulbuls. In the open and with the larger birds it was a bit easier and I had some wonderful views of the amazing kingfishers (they have 11 kinds!), cuckoos (12 kinds), swifts (8 kinds), bee-eaters, paradise-flycatchers, a huge buffy fish owl and of course the extraordinary hornbills with those monstrous protuberances on their beaks (technically called casques).

It all seemed like a long Technicolor dream when I returned to our wonderful cool English air, and the song thrush announcing the spring at last.

Jeremy Mynott

LACKFORD LAKES EVENTS - Tuesday 27th April, Nightingale Walk, £3, 7.30pm to 9pm. Look and listen for signs of nightingales around the reserve. Friday 30th April, Dawn Chorus Walk with warden Joe Davis, £3, 5am to 7am. **Pre-book 01473 890089.** The visitor centre is open from 10am to 5pm from 1st April to 31st October and the reserve is open every day from dawn until dusk.

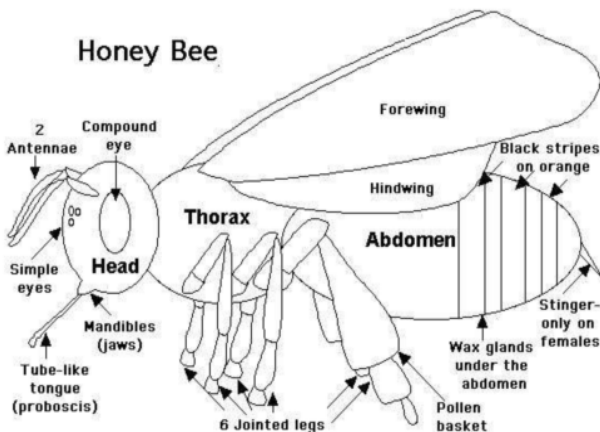
APIARY DIARY. In last month's Village Link, I described the structure of a colony of bees, and how a hive fits together. It is important to describe the anatomy of a honey bee and what each part of it does, to help you understand how they produce honey and wax and how they are able to use complex methods of communication. I keep a species of bee commonly known as Carnolian and formally named *Apis Mellifera Carnica*, of Italian origin and belonging to the European family of honey bees of which there are seven species and named *Apis Mellifera L.* A worker bee looks, simplistically, as per this diagram.

Starting with the head, this is for sensing, feeling and handling. The head has two compound eyes and three tiny simple eyes. The mouth parts consist of two mandibles which are both hinged and these are used for chewing and shaping solids. The proboscis is in three parts, one tube inside the other, and is used for gathering nectar either to ingest or to produce honey. There are two

antennae for smelling and detecting odours. Behind the compound eye is the hypopharyngeal gland which is used for producing food for the queen's larvae and also produces the enzyme invertase which splits large sugar molecules to turn nectar to honey. This is another gland called a mandibular gland from which Royal Jelly is produced. This turns a normal worker bee larva into a queen bee. This gland also produces a scent if the bee is alarmed in any way, alerting other bees to possible threat. There is a brain but no nose.

The thorax is used for walking and flying and also to collect pollen. The surface of the thorax is grey and furry when the bee is young; later black and shiny. There are two pairs of wings and six jointed legs, the front two pairs have hairs on for brushing pollen into the pollen basket (which is what you see as yellow 'lumps' on the bees legs when they have been foraging). Internally, the thorax contains no lungs, but does have spiracles which allow air to enter the body, and these are vital for the hugely strong muscles which control both the legs and wings. The gut passes straight through the thorax.

The abdomen is dark brown or possibly black with lighter shade of stripes, depending on the species of bee. The abdomen contains a honey sac which is for temporary storage of nectar. There is a valve between this sac and the bee's stomach which allows food such as pollen to pass through. This leads to the intestine and rectum. There is a heart in the abdomen which pumps fluids to the head, and all other cavities in the bee



contain blood which is yellow as it is not oxygenated. There are three further glands in the abdomen, the first being wax glands for making honey comb, there is a gland called the Nasonov which produces scent which attracts other bees back to the hive and finally, the venom sac which is attached to a barbed sting.

A foraging bee will return with approximately 40mg of nectar in this sac and pass this to a house bee via their proboscis. The house bee adds further invertase enzyme to turn sucrose into glucose and fructose (main honey constituents) and will deposit the nectar into a honey cell in the hive. She fans it with her wings to evaporate water and concentrate the sugar. This prevents the honey from fermenting in the cell and is then capped with wax to preserve it. This is what we extract to eat.

The stages of growth depend on the time of year, but a queen will go from an egg to hatching in 16 days, a worker in 21 days and the drone will take 24 days. Drones take 13 days after hatching to reach sexual maturity and a queen takes 5 days, but a worker is sterile. A queen can live for up to 4 years and be productive, however, workers will sense when the queen is failing and take steps to protect the colony by producing a new queen to replace her. Drones live for approximately four months, but workers during the summer will literally work themselves to death in an average of six weeks. During the winter, when the colony is very sedate and inactive, the workers live for possibly six months.

The colony is known in insect terms as a caste system; bees are social insects with highly developed methods of communication and a clear division of labour. The queen reproduces, the workers are for cleaning, nursing brood and foraging, and the drones are for mating with virgin queens, after which she will kill him. In addition to scent and touch, bees also communicate with each other by movement. A bee that returns to the hive having found fantastic forage, will do a 'waggle' dance in a particular way to tell other bees where the food source is, in what direction to fly from the hive given the position of the sun, how far to fly, and bees leaving the hive to go to this place will make allowance in their flight path to ensure that the wind does not blow them off course. All very sophisticated and clever, interestingly, bees are the only other animal other than humans to give each other directions.

Onto the apiary then; I have spent the month checking on the activity of the hives, which appears to be healthy and normal, and have brought further equipment to assist with honey production. We have been hammering away for about a week making honey frames and hives (our neighbours thought we had been demolishing walls in the house!) and preserving them with Danish oil. The queens continue to lay more eggs each day and the hives are becoming busy as the weather warms. In the next month or so, I will begin regular inspections to ensure that the queen is fertile and laying well, and that the hive is disease free. More next month on manipulations, when we do this and why, what we look for and what to do, the changing mood of a faulty queen, signs of colony sickness and what to look for with a 'swarmy' colony! Anyone who is interested in seeing the hive, feel free to call me.

Facts for the month; A drone will fly up to 10 miles away from the hive in order to mate and 1 teaspoon of honey takes 154 individual bee flights to make. **Tim Knappett**

NEWS FROM FRANCE. February dawned as bitterly cold as January but after the 15th got progressively warmer, reaching more usual temperatures of 8 degrees by night and 14-16 degrees by day. We had warnings of a big storm on the way from 22nd February which was set to hit us on the 27th to arrive at Arcachon, but by Saturday morning Meteo had re-routed to nearer to us and Royan. Saturday was beautiful and the wind only started to get up after lunch. We shuttered up and went to bed. It hit about 3am and was horrendous. Electricity was on and off and by morning we expected a lot of damage. But apart from one or two tiles and broken garden pots, all was OK. It stayed fairly windy for most of the day but bright. We went to bed and were relieved to get a good night's rest. We were amazed when we switched on the French news to hear the dreadful account of Tempete Xynthia with destruction of the coast round La Rochelle, Rochfort, Il de Rie and onwards to L'aiguillon and La Faute on the marshes – mostly new build bungalows, young couples and older residents, I guess affordable housing. The death toll as I write is 52 dead, the TV pictures are dreadfully distressing with poor dead creatures everywhere, mostly I think sheep. The oyster culture and beds seem to be washed away, a ferry between the islands is lying up on a sand bank and 40,000 hectares of land is under water. At the moment one wonders how on earth it will all be cleared, but life goes on. So there we are, it makes us thankful that our storm on the Saturday night left us relatively unscathed, but our prayers are with everyone who suffered the following night and will for some time to come.

PARISH COUNCIL NEWS:

Little Thurlow Parish Council met on 16th March. Matters discussed included the resurfacing of the parking area on the Sports Field, the re-siting of the road sign in Church Road, car parking in front of the school and the many potholes which still need attention. Councillors had no objections to a planning application for the erection of replacement kennels at Low Farm House and noted that St. Edmundsbury BC Planning Department had given approval for the erection of a swimming pool etc at Little Thurlow Hall, as well as the felling and lopping of conifers at Ascham House. Councillors were briefed on the up to date position regarding the Local Development Framework and noted that the next six week consultation period would commence on 12th April 2010. The next Parish Council meeting will be on 20th April 2010 at 7.30pm in the Village Hall.

M. Hawkins, Parish Clerk

THURLOW BOWLS CLUB. We need more members to keep the Club going next Season. We will be holding an Open Night on Friday 7th May at 6.30pm. If you are interested then please come and have a go. All welcome - old, young and middle aged, male or female.

YOUR BOWLS CLUB NEEDS YOU

A PLEA TO VILLAGE LINK READERS! We have finally finished the spring clean at All Saints, which unfortunately saw the disposal of both vacuum cleaners there (I wouldn't have been surprised to have found them to have round pin plugs, they were that old!) It would be fantastic to hear from anyone who has a serviceable vacuum cleaner, preferably with a hose and attachments, lurking around in the garage or under the stairs which is no longer needed, and could be donated to the church. Could you give me a call on 783654, I will arrange collection from you if you are able to help.

Kevin Crowson

ALL SAINTS' CHURCH WINDOWS ONCE AGAIN SEE THE LIGHT! On Wednesday 24th February, All Saints Church windows were professionally and diligently cleaned by Mel Stewart and Nigel Trunks, who both run independent family window cleaning businesses locally in Haverhill. They laboured the entire day in the cold to reveal details in the stained glass which were not visible before the clean, using purified water and specialist equipment which dissolved an estimated 50 years of grime both inside and out on the bottom windows. They look simply stunning in the sunlight and Mel is due to return in April to finish the top windows also.

A huge thanks must be said for the sponsors of this special project, being both Mel and Nigel (if you need a great window cleaning service at home, look no further than these two chaps who can be contacted on 01440 708504 and 01440 763867 respectively, both highly recommended!) along with Thurlow Garage, The Cock, TKHeat and the Co-operative food store in Haverhill who all generously donated towards this. Kevin and I also helped to raise toward the fund by assisting Giles and Janie in a fantastically successful Casino night at the pub on New Year's Eve which saw £280 in total, raised for charity and the village so a massive thanks to them for a great night. Thanks to Patricia Banks who dealt with all the admin for me and lastly, there have been several private donations from people in Great Thurlow to support the project for which I am very grateful.

Tim Knappet

W.I. President Jill Steele welcomed twelve members and two visitors to the March Meeting . She gave notice of events happening in the area as well as those organised by the Federation. There is to be an outing to Hatfield house and a chance to learn of Judaism which caused interest to some members. Four members will try their luck in the Federation Quiz to be held at the Corn Exchange on the 23rd March. Our speaker was Gillian Grinham, well known to some of us. She gave a brilliant performance of the late Joyce Grenfell She was warmly thanked by Jill who said it was fitting that we had had such good entertainment for this special celebration. It was a real fun evening and as we were celebrating three birthdays in the same week, two of them big ones, secretary Margaret had made a beautiful cake complete with three candles for us to enjoy and Anne R had supplied the wine. Prize winners in the draw were Iris Eley, Molly Hawkins and Gillian Grinham. Next month we will hear of the work done by the ACWW, the scheme which helps women in the poorer countries of the world, 13th April, Village Hall, 7.30pm.

Iris Eley

Thurlow Estate Farms. It seems almost incredible, that just 3 weeks ago, the land was cold and the rain running down the field tramlines into the ditches which were working overtime. Temperatures are now comfortably into double figures and there has been much farming activity during this dry period.

Spring Beans have been sown, providing a welcome diversion for the pigeons, who have left the oilseed rape, to have their fill of beans, that are on the surface where the drills lift in and out of work. Spring Malting Barley has been planted after the Sugar Beet at Balsham, and with temperatures warming, the crop should soon emerge. The remnant of last season's barley crop has been going over to Belgium, for use in their brewery industry. The current euro exchange rate makes our barley more attractive to European maltsters. Rolling has taken place on the lighter soils where wheat plants have literally been lifted out of the ground by successive frost action over the winter, and we are pushing on with fertiliser applications. The meadows which are planned for cutting, are being rolled to reduce the risk of soil contamination of silage.

Thurlow Woodlands. The Woodland Management Plan and Deer Management Plan are now with the Forestry Commission pending comments/approval.

Felling is now full steam ahead in Norney Plantation and Vestey's Wood. At the time of writing, it finally feels like the milder weather is more prominent, thus felling should now be on the work list throughout the coming months. Felling Licences have been submitted to the Forestry Commission for 15 sub-compartments which should see the team through the spring and summer. Hopefully, by this time, the Woodland Management Plan will be in place, which will remove the requirement to submit individual Felling Licences (thank goodness!!).

You may recall from January's article, that the initial inspection (as part of certifying the woodlands under the UK Woodland Assurance Standard (UKWAS)) was recently undertaken'. A report has now been produced identifying work we must carry out to receive certification, and we are working our way through this list. These works range from keeping records and training up-to-date and reviewing H&S policies and Risk Assessments. A follow-up meeting has been arranged during June, the outcome of which should see the woodlands becoming certified.

Following recent felling in the SSSI wood near Great Bradley, Natural England and the Forestry Commission are returning in April to undertake an inspection of the work and to look at the flora growth in the 1acre deer fenced coop in the wood. This should hopefully provide a good comparison of an area which is protected from deer and rabbits with an area which has only the brush-constructed wigwam structures.

Thurlow Estate Management Limited. Quotations are being sought for this year's external redecorations. Thirty properties are due to be painted this summer. Pre-paint repairs should commence in April. The Maintenance team are also due to repair the roof on one of the Cattle Sheds at Weston Woods Farm, where the split firewood is stored. The Countryside Foundation for Education School Visit is on 9 June. The Estate has visited Belvoir Estate, Lincs, to compare the running of each day and bounce ideas to see if any new ideas/displays/demonstrations could be introduced.

Following the publication of Karen Smith's letter dated 10 December 2009 in the last Village Link concerning the proposed footway widening at 'Location 3', discussions have progressed with Suffolk County Council to agree the exact boundaries of the routes to be widened.

Properties to let

121 School Terrace, Gt Thurlow (Semi Detached, 2 Bed, OFCH, Garden, Off-road Parking)

Manor Farm Office, Horseheath (653 sq.ft, OFCH, Off-road Parking, Broadband)

Rook Tree Barn, Great Wratting (1,830 sq.ft), open plan air conditioned converted barn with first floor conference room, OFCH, car park, broadband)

We also have a number of sheds/garages available for rent, and units for storage.

For more information, please contact the Estate Office (01440 783661).

Thurlow Hunt. With heavy rain forecast during the week leading up to the Thurlow Hunt Point-to-Point, there was a certain amount of anxiety in the air when the rain gauge was checked on the race day. Fortunately, the heavy rain avoided Horseheath and the well-drained and open land allowed the course to dry well leaving the going "good to good-to-soft in places". The weather held off and a great day's racing was enjoyed by all. The Horseheath Hunt's Club Members Race was won by Romper Stomper, owned by Mr M Smith, who qualified with the Thurlow Hunt. The heavens finally gave way at 7.00pm that day, and didn't stop for the rest of the weekend. The Puckeridge Hunt Point-to-Point is on Saturday 10 April with the pony racing starting at 1.00pm.

Hounds Greedy, Ripple and Moment are due to whelp in April. As mentioned in the previous article, Bookcase's litter is going out to walk in April. A hound 'goes out to walk' with a selected 'walker' and the hound will live with their walker, before returning to the pack usually after they've been with their walker for up to 10 weeks, they are 'coupled' with an older, more experienced hound. A couple is a leather collar linking the hounds so they walk side-by-side. The older, more experienced hound, will react and honour the Huntsman's instructions. In turn, the hound puppy will learn the instructions quicker. Hence, when describing the number of hounds one refers to couples. The hound puppies are then judged at the annual Puppy Show in the summer and any hound which wins its class, a silver spoon is presented to the walker.

Thurlow Shoot. The gamekeeper is 'catching up' hen pheasants. These will be put to a cock pheasant and the resultant eggs sent for incubation. It is hoped that circa 1,200 chicks will return as day-olds where they will be hand-reared until being released at 6 – 8 weeks old.

The control of magpies, crows and grey squirrels continues ahead of the songbird nesting season. The aforementioned are renowned for destroying localised populations of nesting birds. In addition, rabbit control has stepped up a gear to make up for time lost when ground conditions were unfavourable.

Release pen maintenance commences in April. In addition, some pens will be completely removed and others extended, following slight changes to some of the existing beats.

And finally... why shouldn't you tell an Easter egg a joke? *It might crack up!*

THURLOW PRE-SCHOOL CELEBRATES NEW BUILDING. After nearly four years we finally managed to open our replacement pre-school building in January. In early 2006 it was obvious that our portacabin was no longer keeping the weather out very well with regular roof leaks and rotten wall cladding.

To keep costs down we decided to produce the drawings and project manage the build ourselves as we had some expertise within the committee. We started working on plans and thinking about funding. It became clear that our best chance of funding was via the SCC capital grants programme, which at that time was related to extending our provision. However we already offered afternoon sessions and in truth we weren't ready to offer anything further at that time, and we missed out on that grants programme and felt our dreams might be out of reach.

We quickly became more optimistic when details of the next programme became available and was based on quality of provision. With a new committee and committed staff we were already embracing the new Every Child Matters curriculum and ready to push on! We got our funding bid ready and started seeking other funds to support this, and suddenly we had real momentum. In May 2008 St Albans based developer Mount Anvil plc committed £7,500 through an employee scheme and this seemed to give other funders belief! Shortly after further commitments from Havebury Housing (£5,000), Cllr Karen Knight's locality budget (£2,500) and our catchment area Parish Councils meant we were approaching 15% of our target. Our own fundraising raised around £6,000 through various fundraising events including a sponsored parachute jump.

We got the planning permission, had spoken with the relevant parties, and now were ready for Janine Taylor and Erika Fletcher to navigate us through the final production of our bid document and on the 2 December 2008 we heard the amazing news!

Surely now we weren't far away, started final negotiations with our builder and looked forward to making a start at Easter . . .

There was more negotiation to come though! The owner of an adjacent property asked if we would consider relocating the new building onto the site of the existing portacabin. This gave us two problems – first that we had nowhere else to operate for a while, and secondly that this meant a new planning application. To preserve relationships we decided that it was best to try and comply with this request despite the delays and so finally with alternative premises and a new planning permission we were finally ready to start during the summer holidays in 2009, hoping for a smooth build and possibly to open in November at half-term.

This project never seemed to be without bumps along the way and firstly the archaeologists wanted to review the site during the excavation, and then triple-glazed windows from Germany took a little longer to arrive than hoped. This meant November couldn't be achieved, but after nearly four years a few more weeks didn't seem too much of an inconvenience and finally our children were able to run around our warm, dry new building at the start of the Spring term!

Mat Cowell

ST. EDMUNDSBURY BC, LOCAL DEVELOPMENT PLAN - There will be a "drop-in" session at Thurlow Village Hall on Wednesday 28th April 2010 from 4pm to 7pm for any villagers with an interest in or queries about the Plan.

POLICE NEWS. The next SNT tasking meeting is on Wednesday 7th April 2010 at 2.00pm in Great Barton Village Hall. This is open to the public and is your opportunity to discuss local issues and help set priorities for the Police and partner agencies. Burglary of outbuildings is still being committed in the area. Please do not be complacent, secure as best you can all outbuildings with good quality locks, security mark any property particularly power tools and garden machinery/equipment also record any serial numbers you have. Please do ring us with details of any suspicious vehicles or persons in the area.

We are continuing to conduct speed checks in the villages, as this is one of the biggest concerns for residents. The Speed Watch scheme continues to develop and we are working with Parish Councils and Councillor Jane Midwood to introduce the scheme across the area.

Our Sgt Kevin Horton is away from Clare Police Office for most of the month! The team will answer any queries in his absence if you email us on stedsruralsouth.snt@suffolk.pnn.police.uk

Good News. One man has been charged this week with two burglaries at Kedington. Also a joint operation with Essex involving the execution of three warrants took place on Wednesday 25th February 2010. Enquiries are still on going but burglary of outbuildings was the source of the warrants. Three men were arrested and a quantity of property recovered which is waiting to be identified.

Your Safer Neighbourhood Team is:

Sgt 566 Kevin Horton

PC 18 Trish Sinclair

PCSO 3219 Kayla Packman

PC 704 Ruth Horton

PCSO 3140 Alex Foster

PCSO 3218 David Matchett

Please consider registering with Police Direct on www.suffolk.police.uk which will enable you to receive relevant information about crime and policing issues in your area.

The Police non emergency number is 01284 774100, or you can e-mail us at

stedsruralsouth.snt@suffolk.pnn.police.uk

Please dial 999 if immediate response needed.

If you wish to report criminal activity in your area anonymously please ring the Crime Stoppers number 0800 555111

ROYAL BRITISH LEGION POPPY SUPPORT. For Service people past and present and their families - If you served, we could serve you. You could be eligible for our assistance if you have served or are currently serving in the Armed Forces, or are a dependant of someone who has served. If you think the Legion could help you or someone you know, or you need some advice, please contact us. Tel. 01284 725833. www.britishlegion.org.uk.

VILLAGE LITTER PICK

**Great and Little Thurlow
17th/18th April 2010**

All the necessary equipment will be provided, just contact Kevin Beal on 783644

Your help would be much appreciated

HOUSE AND GARDEN FAIR IN AID OF ASTHMA UK

Tuesday 11th May 2010, 10am - 4pm at Chilford Hall, Linton.

60 stalls selling everything you need to revitalize your home, plus jewellery, shoes, clothes, toys and food.

For more information contact Jo Fairey on 01223 894866

DEDHAM VALE SPRING WALKS: Saints and Dragons in Wissington, Sunday 25th April 2010, 10am to 12.30pm. Join us in this first of our series of walks celebrating the 40th Anniversary since the Dedham Vale was designated an Area of Outstanding Natural Beauty and discover heritage, saints and dragons along the way. **Tel. 01473264263**

QUIZ NIGHT

In aid of Thurlow Village Hall Funds

Saturday 10th April 2010

at

Thurlow Village Hall

7pm for 7.30pm start

£6 (to include light supper)

Teams of 8 maximum

Donations of Raffle Prizes welcome

PAPERS - Early morning delivery of daily and Sunday newspapers. Also magazines, comics etc. Tel. Mary 01440 783585.

Casino Night

Friday 16th April
8pm – 11pm
The Cock Inn
Thurlow

Free Lucky Ticket Raffle
 Win Two Tickets To A Friday Night Race Meet At Newmarket Races

Casino Night in aid of All Saints Church Great Thurlow
Finger Buffet Included
Free Casino Chips
For Tickets
 Call Tim or Kevin on 01440 783654

Tickets £10

Organised by: Great Thurlow PCC

GENUINE EXAM QUESTIONS FROM YESTERYEAR

ELEVEN-PLUS

1. Multiply 7,296 by 479.
2. There are 120 children in a school. If the number of girls is 8 more than the number of boys, how many boys are there?
3. (a) $7.42 - 0.156 + 8.007$ (b) $258.4 - 29.62$
4. Find the number of days from 23rd November 1950 to 7th January 1951, including both these dates.
5. I want to visit my friend who lives on a farm $4\frac{1}{2}$ miles off. If I wish to arrive at a quarter to one, in time for dinner, what time must I leave home if I walk at the rate of 3 miles an hour?

O LEVEL

A vessel in the shape of an inverted cone, with axis vertical and semi-vertical angle 30° contains water to a depth of 12cm. If a metal cube of side 5cm is lowered into the water until completely submerged, calculate, correct to the nearest mm, the height through which the water surface rises, assuming that no water overflows.

(The volume of a cone = $\frac{1}{3}$ (area of base x height). Take π as 3.142)

Answers on page 19

2010
DINNER AND DANCE

Saturday 29th May 2010

7.30-11.30pm

Thurlow Village Hall

**Fish/chicken and chips dinner served at 8.00pm prompt
(veggie option available) followed by live music and dancing to**

Easy Livin 60-90s Band

Tickets £15 each. Admission by ticket only.

Dress smart casual

Call 01440 783756 or email ltbradley@uwclub.net to book

In aid of Little Bradley Church

Barn Dance - Thurlow Barns

Fundraiser for THSA (Thurlow School)

Saturday 8th May 2010

8pm - 12am

Fendragon Ceilidh Band with caller

Ticket price £15 each

includes fish & chips or chicken & chips.

Bring your own drink, Pudding stall on the night

Contact details - Helen 07941124796



TKHeat

105 The Hill, Thurlow
Kevin@TKHeat.co.uk

* Oil Boiler Servicing * Water
Conditioners * Shower Pumps *
Bathrooms * Kitchens *

**No Job Too Small
So get it fixed!**

* Refurbishments * General
Plumbing * System Treatments *
Free Quotations * Local
Community Plumber *

OIL BOILER SERVICING



Registered
Business

01440 783654

07966 208794

KEDINGTON BUTCHERS

Top quality meats

Home-cooked
hams

Game

Orders Taken on

01440 703119

Would **you** like a daily doorstep
delivery of fresh milk, bread,
cream, yoghurts, breakfast juices,
eggs, potatoes, water, calor gas
and lots more?

NO DELIVERY CHARGE

Why not give
us a try and
have your
first weeks
milk for **FREE**?*



Tel: 01440 702220

Fax: 01440 702240

Email: info@moojuicedairy.co.uk

**subject to area, max. of 7 pints*

We stock the full range
of Calor Gas products
for your BBQ, heating,
cooking, camping,
forklift and caravan.



FREE DELIVERY

Why not save your
back (and fuel) and
let us deliver.
Or call in and collect

We are open
Monday to Saturday
from 7am until noon

4 Manor Road
Haverhill, Suffolk
CB9 0EP
Tel: 01440 702220
Fax: 01440 702240
moojuicedairy@tiscali.co.uk



GARDEN MAINTENANCE

We offer a professional and reliable service from lawn mowing to new planting projects.

Other services include tree surgery and hedge cutting.

Please telephone Zara or Francis at

Napier Garden Planning
Tel : 01638 508845

Westley Waterless, Newmarket
e-mail : napierfz@aol.com

Personal Computer Training
in your own home

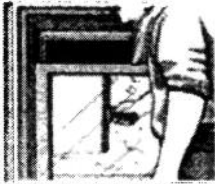


Troubleshooting Internet connections
Focus on your tasks using MS Word etc.
Create your own documents, templates
PC housekeeping tips, backup and filing
Handy hints on e-mail. Internet use
Hands on help to suit your needs
and at your pace.

**Please call to discuss or arrange
an appointment**

**Carol Warden
Tel: 01440 783455**

SHINE. WINDOW CLEANING SERVICES



WINDOW CLEANING
GUTTERS
CONSERVATORIES
PATIOS + FACIAS

**PLEASE CALL FOR
A FREE QUOTATION**

JOHN MARCHANT
No 8 ROSE HILL, WITHERSFIELD

**TEL/FAX: 01440 760916
MOBILE: 07850 141663**

FULL PUBLIC LIABILITY INSURANCE

Your family's eyes are
indispensable,



so choose a family opticians
with **75 years of experience**

Billson Opticians

10 Queens Square, Haverhill 01440 714441
55 High Street, Linton 01223 891333
30 High Street, Clare 01787 277600

caring for the community's eyes since 1935

FREE ELECTRICAL SURVEY

JFK Services (UK) Ltd

For a free, concise report as to whether
Your home meets current standards
Please call



Tel: 01440 704823

Email: enquiries@jfkservices.net
www.jfkservices.net



Tree Surgery Services

Fully Qualified and Insured
for all types of felling,
climbing & reduction work.
Also Hedges and Lawns

For friendly advice & quote please call

Alexander Talbot on
01440 762855 / 07979 620488

*alexandertalbot@btinternet.com
www.tree-feller.com*



Woodchip &
Logs available

Field (compost) Ltd **high quality peat free compost** **products**

Free Delivery within 15 mile
radius of Haverhill

- multi-purpose potting compost
- soil conditioner
- mulches
- topsoil
- lawn dressings
- grow bags

available in small **bags** or **loose**.
we supply made to measure raised
bed kits

other products available
contact us for more information:-

compost@fieldcompost.co.uk

call **01440 966966**

07748 029489

www.fieldcompost.co.uk



JAMIE MORAN

**DECORATING SERVICES AND
WALLPAPER SPECIALIST**

20+ years experience

Fully Qualified

Thurlow based

Mobile 07861 728204

Tel 01440713912

INFORMATION FOR RESIDENTS. This is a brief guide, intended especially for newcomers to the villages, with information about the facilities and services available locally and some useful telephone numbers and addresses.

Emergency

Emergency telephone 999

Police Response (any officer, non-emergency) 01284 774100,
stedsruralsouth.snt@suffolk.pnn.police.uk

Police Direct messaging service (information only) 01473 613997,
police.direct@suffolk.pnn.police.uk

Local Refuge in case of major disaster or if village cut off: Thurlow Village Hall; key-holder Diana Allin, 89a Hill House, Gt. Thurlow, 01440 783560

Suffolk Fire Service 01284 558888

Hospitals

West Suffolk (Bury) 01284 713000,
A/E Department 01284 713333
Addenbrookes (Cambridge) 01223 245151

Doctors

The Christmas Maltings & Clements Practice (Cornish), Camps Road, Haverhill
08444 773543

Selby Practice 01440 702010
Stourview Medical Centre, Crown Passage,
Haverhill 01440 761177

Haverhill Social Services 01440 764949
Citizens Advice Bureau 01440 704012

St. Edmundsbury BC Emergency Planning
01284 763233
Floodline: 24 hour with recorded update 0845 9881188
EDF electricity main cabling (24 hour) power cut and emergency, Helpline 0800 783883
Anglia Water water/sewerage (24 hour)
08457 145145
British Telecom faults (24 hour) 0800 800151
Suffolk Radio (BBC FM 103.9 or 104.6)
01473 250000

Other useful contacts

Parish Clerks:
Little Thurlow, Molly Hawkins 01440 783259, mollyhawkins10@aol.com
Great Thurlow, Diana Allin 01440 783560, nilla.home@tiscali.co.uk See Parish Council Notice Board in front of the Village Hall for further information and dates of meetings etc.

St. Edmundsbury Borough Council:
General enquiries 01284 763233

Website www.stedmundsbury.gov.uk

Haverhill offices 01440 702271

District Councillor: Robert Clifton-Brown,
01440 783562, robert.clifton-brown@stedsbcc.gov.uk

Waste Management 01284 757320 – bin collection is every Wednesday morning alternating black bins one week and brown and blue bins the next. Environmental Health (pest control) 01284 757054

Suffolk County Council:
General enquiries 08456 066067
Website www.suffolkcc.gov.uk
County Councillor: Jane Midwood
01440 821428,
jane.midwood@councillors.suffolkcc.gov.uk

Thurlow Estate Office -
Agent: Tim Barling 01440 783661
Assistant to Agent: John Frank
01440 783661

Chemists:
Boots Chemists 01440 702058
Co-op Pharmacy 01440 702079
Sainsbury's Superstore Pharmacy
01440 708043

Useful contacts cont...

Vets:

Swayne and Partners, 84 Hamlet Road,
Haverhill -01440 702007

Lida Vets, 162 High Street, Newmarket
01638 560000

Hawkedon Veterinary Surgery
01284 789428

Age Concern: Mary Hilton 01440 783649

Libraries:

Haverhill 01440 702638

Bury St. Edmunds 01284 352545

A mobile Library visits the village on
alternate Mondays, stopping at Sowley
Green, 150 Bury Road 11.30-11.40am,
Great Thurlow, 109 Bury Road 11.45-
12.10am and Little Thurlow Green,
1 Coronation Villas 12.45-1.00pm.

Transport

Local Bus Service:

Current timetables are on display at
Thurlow Stores

Dial-a-ride 01440 712028

Taxis: several operate from Haverhill – see
Yellow Pages

Local facilities

Thurlow Stores & Post Office, Mrs.
Patricia Banks 01440 783214

Opening hours: 8.30am to 5.30pm each
day, except Wednesdays and Saturdays
8.30am – 12.30pm. Closed Sundays and
Bank Holidays.

Newspaper delivery: Mary Atherton
01440 783585

Plumbing Services: TK Heat
01440 783654, 07966 208794

Thurlow Village Hall bookings: Diana
Allin 01440 783560

Churches: Great Thurlow (All Saints),
Little Thurlow (St. Peter's). Part of the
Stourhead Benefice which includes the
Bradleys, the Wrattings, Barnardiston and
Kedington. Rev. John Eley 01440 710216

CEVC School, Little Thurlow, Head
teacher Ros Bunting 01440 783281
Thurlow Pre-School. Secretary Mat Cowell
mathew.cowell@sky.com

Thurlow Mother & Toddler Group: Rosie
Winner 01440 702182 and Helen Smith
01440 783272

Thurlow Sports Club, secretary Allan
Loveday 01440 707416

Thurlow Fayre: Janice Klimcke 01440
783626 and Diana Allin 01440 783560

Thurlow Garage (Great Thurlow)
01440 783248

The Cock (Little Thurlow) Janie &
Giles Reardon-Smith 01440 783224

Local Societies

Women's Institute: President Jill Steele
01440 783310

Village Hall Committee: Chairman Janice
Klimcke 01440 783626

Carpet bowls: Ella Ainsworth
01440 783349

Outdoor bowls: Peter Thomas
01440 783700

Woodcraft Folk (children's activity for
ages 5-13): Diana Allin 01440 783560

Answers to exam questions on page 13

ELEVEN PLUS

1. 3,494,784
2. 56 boys
3. (a) 15.271. (b) 228.78
4. 46 days.
5. 11.15am

O LEVEL

145mm

Stourhead Benefice Monthly Service Rota, April 2010

Rev. John Eley 01440 710216

Steve Diddams 01440 710225

HOLY WEEK	Monday Lt. Wrattling 6pm Compline	Tuesday Lt. Wrattling 6pm Compline	Wednesday Lt. Wrattling 10am HC 6pm Compline	Maundy Thursday Kedington 7.30pm	Good Friday Lt. Thurlow 11am Kedington 7pm	Easter Eve Gt. Wrattling 6pm The Easter Happening
EASTER DAY 4 th April		9.30am Kedington FC		11am Gt. Bradley FC		
Sunday 11 th April		9.30am Barnard- iston HC	9.30am Kedington SW	11am Gt. Thurlow HC	11am Gt. Wrattling SW	
Sunday 18 th April			10am Gt. Bradley Benefice HC			
Sunday 25 th April	8am Keding-ton HC	9.30am Lt. Bradley HC	11am Gt. Wrattling HC	11am Gt. Thurlow SW		6pm Kedington Evensong

john.eley@btopenworld.com

ALL SAINTS' CHURCH, GREAT THURLOW PCC DRAW CLUB March winner with end of year bonus J. Hearn. The new draw year starts in April. For a modest contribution of £15 for the year, you can help keep the Church active and have a chance of a cash prize - more players, more prizes. Please complete the slip below and take it to the Village Shop with your contribution.

NAME.....

ADDRESS.....

Cash £15 or cheque payable to PCC of Thurlow

Dates for your diary: Casino Night in aid of All Saints' Church funds 16th April, 8pm at The Cock
 Little Thurlow Parish Council Meeting 20th April at Thurlow Village Hall, 7.30pm
 Garden Party at Gt. Thurlow Hall in aid of Churches 27th June
 The Thurlows 2010 Book Launch Party 25th September

Front cover photo: Greater Spotted Woodpecker, copyright Basil Warren.

Little Thurlow village website is www.littlethurlow.org